



Quick Guide to Signal Strength Testing

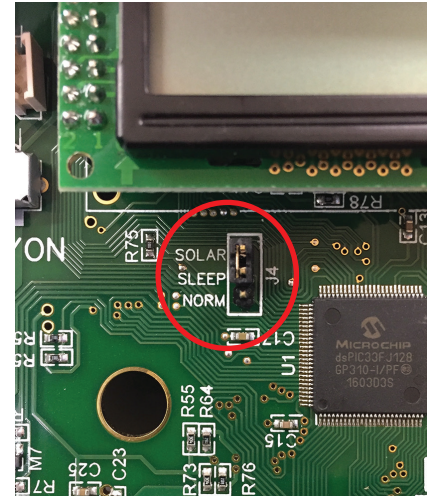
Using any AgSense unit that contains an LCD screen. (Crop Link shown)



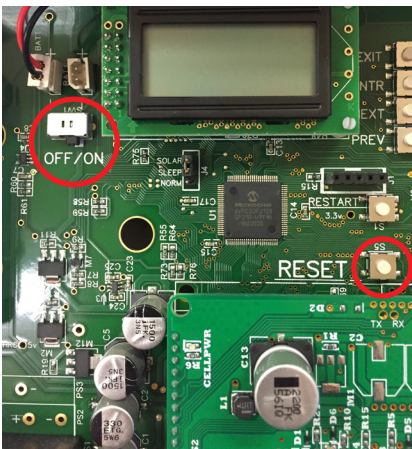
1. Make sure the Cell Antenna is placed on top of the metal bracket.



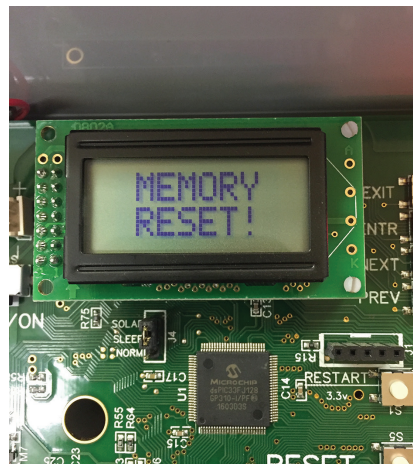
2. Make sure the unit has a fully charged battery. For testing signal strength only (used as a handheld device) there does not need to be any power cable.



3. Make sure the Jumper (J4) is covering the SLEEP and SOLAR pins. (see the red circled area)



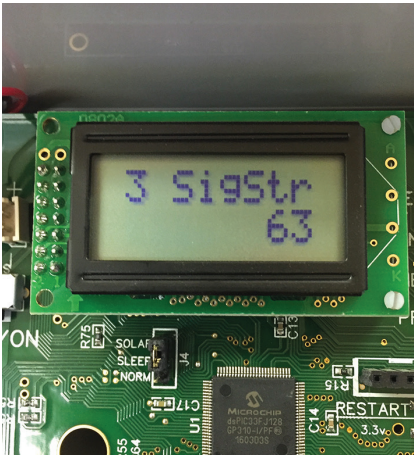
4. Hold in the RESET button while turning on the Power Switch. (see red circled areas)



5. Make sure the LCD Screen shows MEMORY RESET.



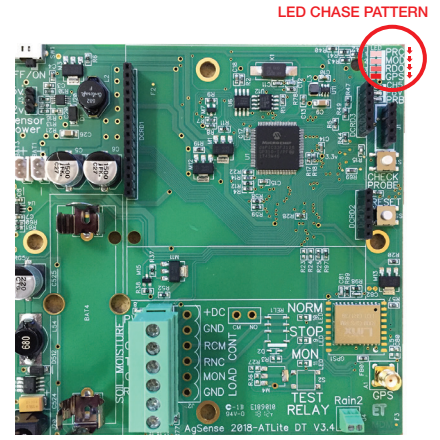
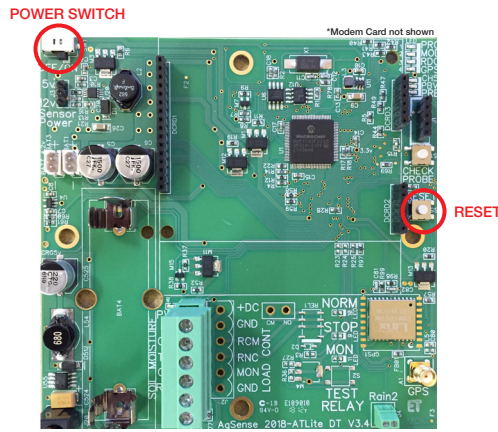
6. Wait for the unit to do its self-checks, and finally say CropLink INSTALL.



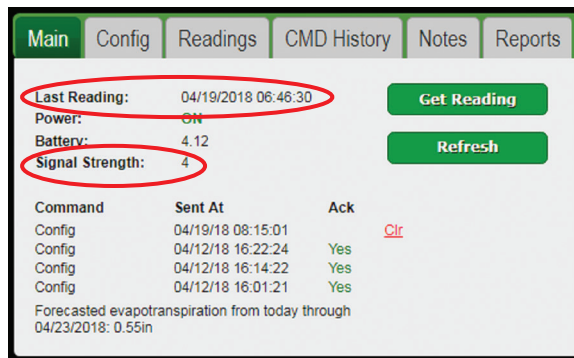
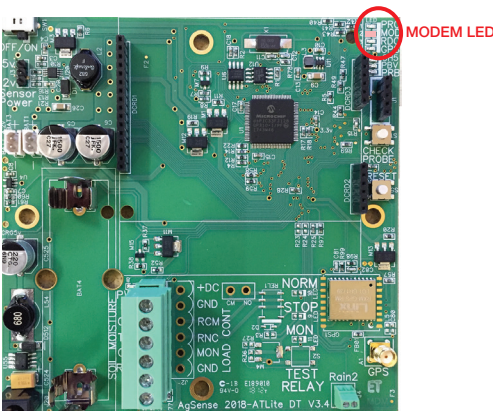
7. Use the Buttons next to the LCD Screen to see the signal strength. Press ENTER once to see SYSTEM INFO, then press ENTER again to see the SERIAL NUMBER, Press NEXT to see the SOFTWARE VERSION, and NEXT again to see SIGSTR (signal strength) with a number below it. This number is the signal strength. If the unit has not connected to a tower yet, you will see number 63 (63=no signal) displayed. Wait a minute, then to check again, simply press the PREV button to go back one level, and then press the NEXT button to go back to SIGSTR and see if the signal strength has changed. **The range of signal strength is: 0=very low, 31=highest, and 63=no signal.** Above are examples of no signal (63), and valid signal (3).

8. After a few minutes, the unit should connect to AgSense and the LCD Screen will switch to CROP LINK. This means the unit was able to connect, and was able to send/receive data correctly.
9. A minute or two after seeing the screen change to CROP LINK, the unit will power itself down and go into "Sleep" mode. If you are done testing signal at your current site, just turn off the power switch of the unit. If you wish to re-test again, return to Step 4.

Using any AgSense unit that does not contain an LCD screen. (AquaTrac Lite Shown)



1. Make sure the Cell Antenna is placed on top of the metal bracket. Make sure the unit has a fully charged battery. For testing signal strength only (used as a handheld device) there does not need to be any power cable.
2. Hold in the RESET button while turning on the Power Switch. (see red circled areas)
3. Make sure the 4 circled LED's perform a sequential chase pattern (if they do not, repeat Step 3).



4. After a few minutes, the unit should connect to AgSense and the Modem LED will switch from blinking to be on SOLID RED (not blinking). This means the unit was able to connect, and was able to send/receive data correctly.
5. Log into your AgSense account to view this unit. From the Unit page, you will see the "Last Reading" time has updated, and you can see the "Signal Strength". To test at a new location, return to Step 3.