

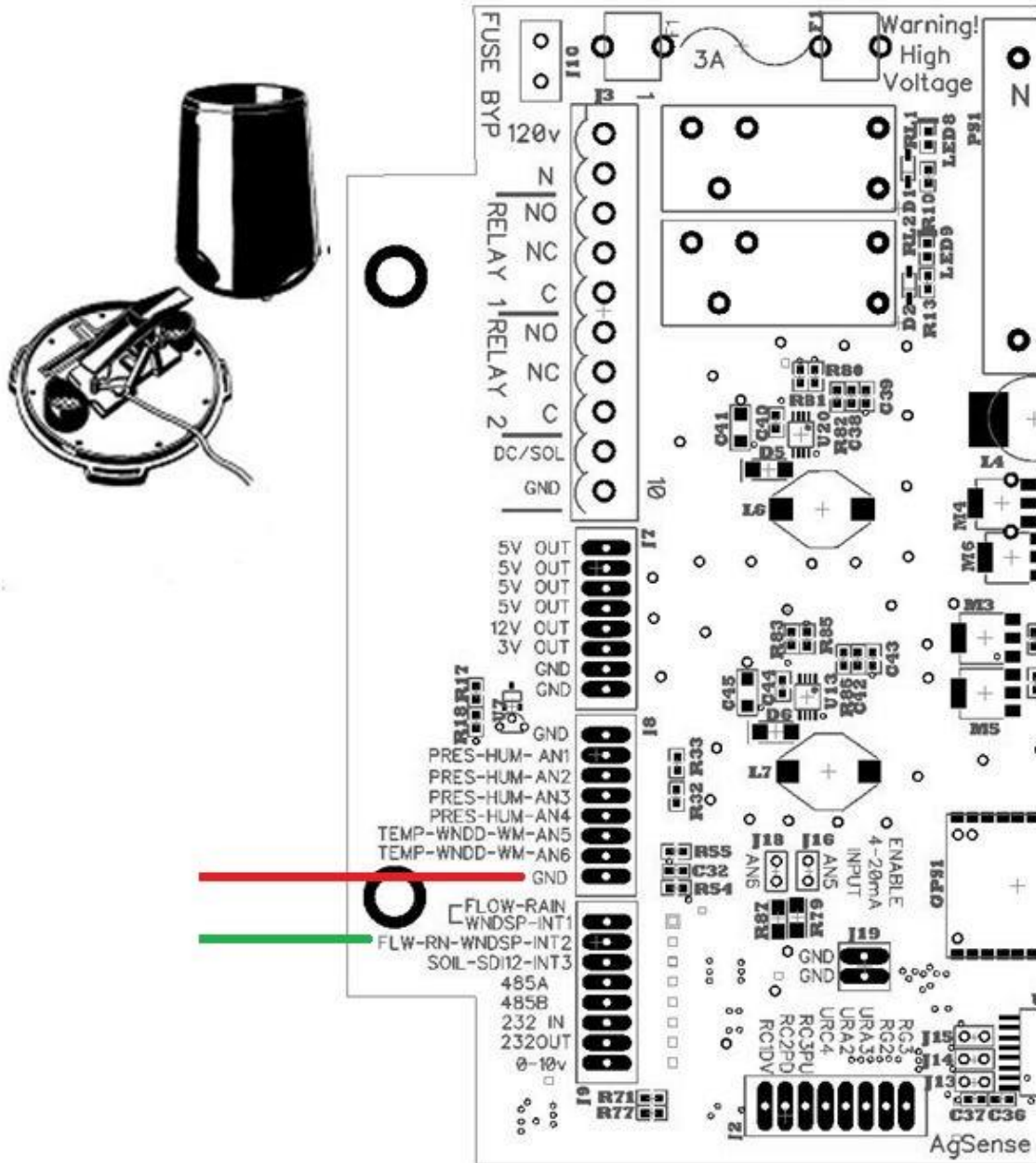
WIRING INSTRUCTIONS

2010-16

CROP-LINK

Weather Instrument Wiring

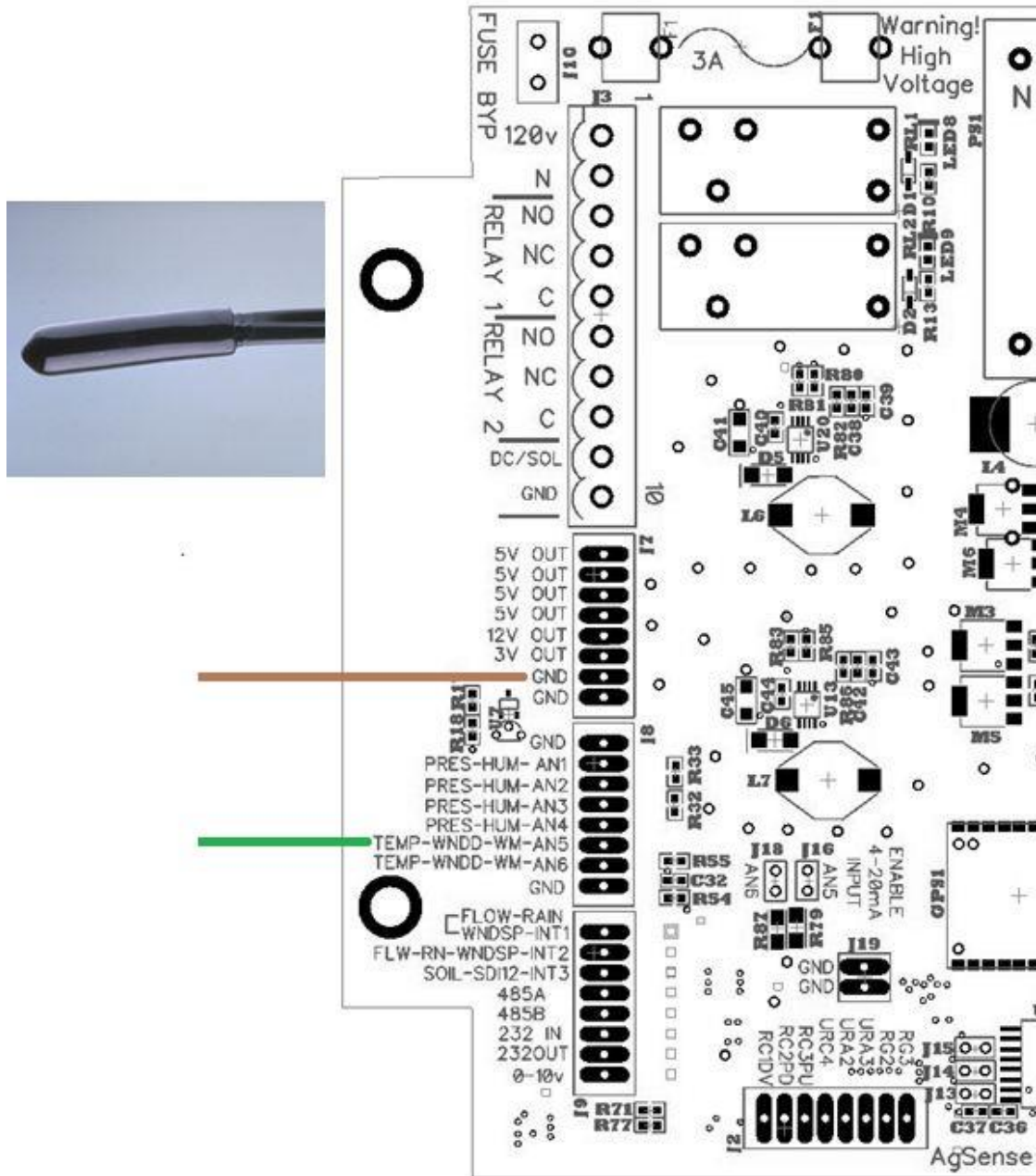
Rain bucket wiring on a Crop link



The rain bucket is wired into the Crop link as follows,

- Red wire goes to any terminal marked GND
- Green wire goes to Rain/Int2/RA13

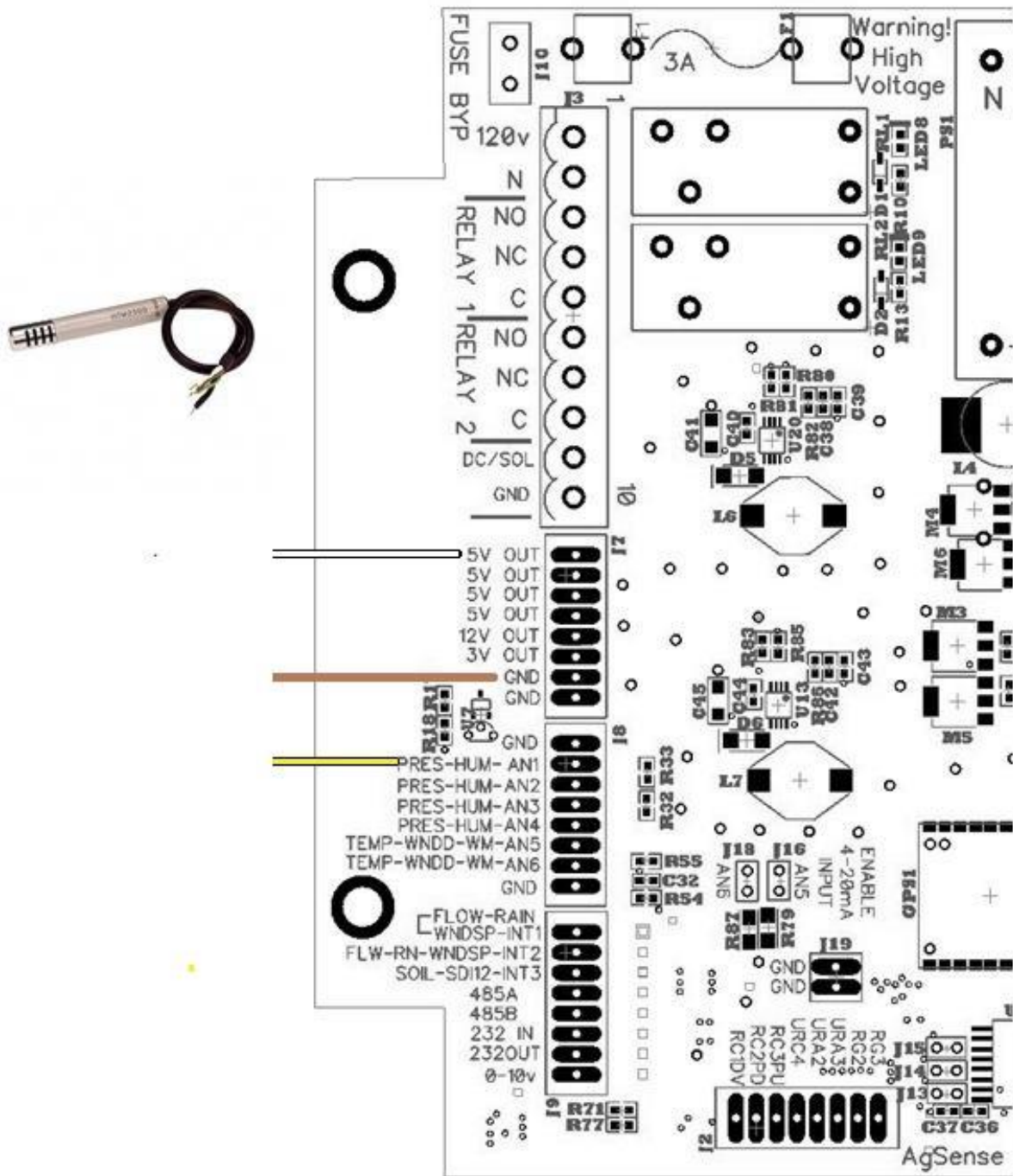
Thermistor wiring on a Crop link



The Temperature sensor (thermistor) is wired into a Crop link as follows

- Green wire goes to HUMTMP-ANLG6-RB9
- Brown wire goes to any terminal marked GND

Humidity wiring on a Croplink



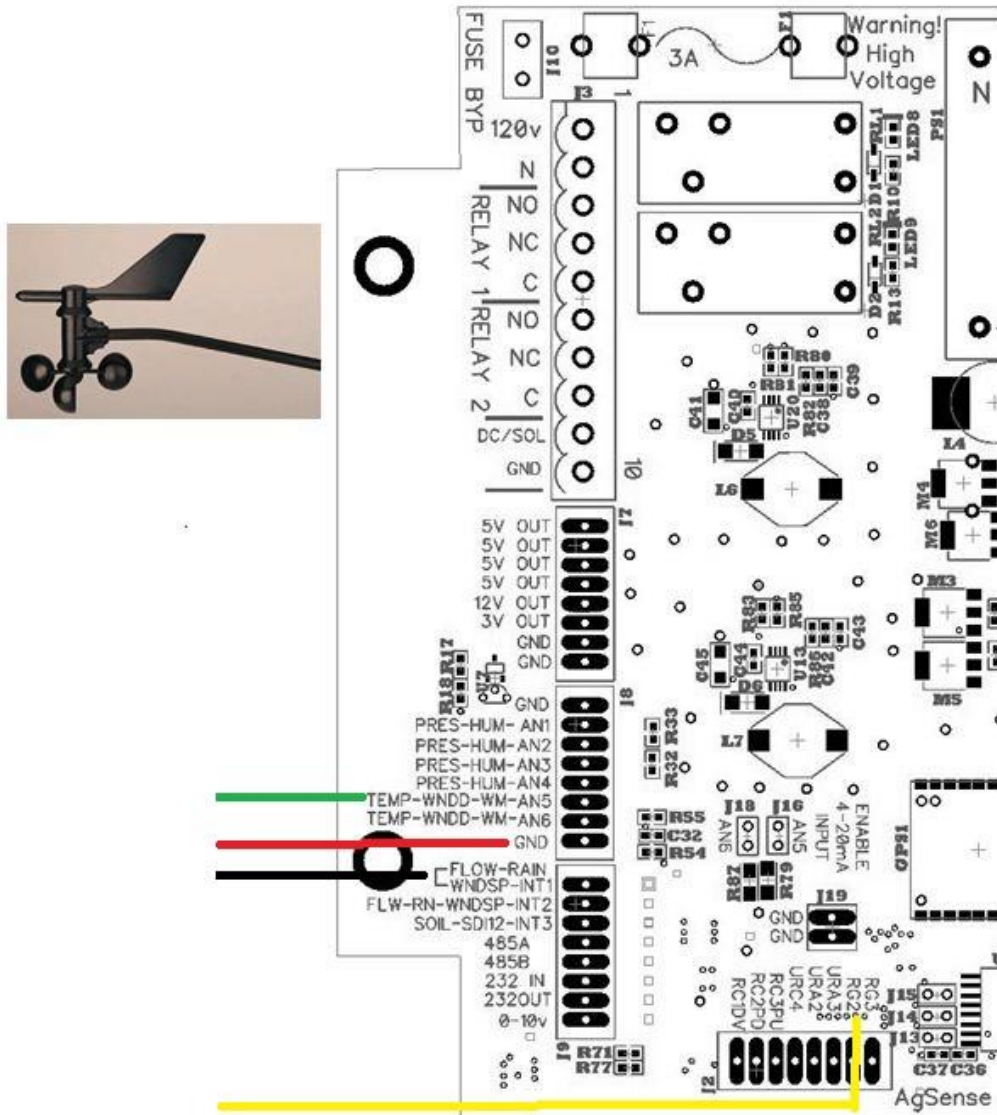
The Humidity sensor is wired into a Croplink as follows

- Yellow goes to PRESS-ANG1-RB1
- Brown wire goes to any terminal marked GND
- White goes to 5Vout

Anemometer wiring for Crop link

Anemometer stem needs to face north

See Anemometer instruction booklet for calibration instructions if needed -
Anemometer comes Pre-calibrated to north (stem facing north) from AgSense



The Anemometer is wired into the Crop link as follows

- Green goes to terminal HUMTMP-ANLG5-RB5
- Red goes to any terminal marked GND
- Black goes to FLW/INT1/RA12
- Yellow goes to RG2